



9 Northfield Drive, South Kirkby, Pontefract, WF9 3TD

Hitting the market with Kestrel Estates is this stunning 4 Bed detached home on this ever popular development, which is perfect for schools, amenities and rail links.

Downstairs, the property briefly comprises hallway, stunning lounge, open plan kitchen/diner opening up to the garden through the patio doors, upstairs you will find the master bedroom with en suite, 3 further bedrooms and a house bathroom along with storage cupboards.

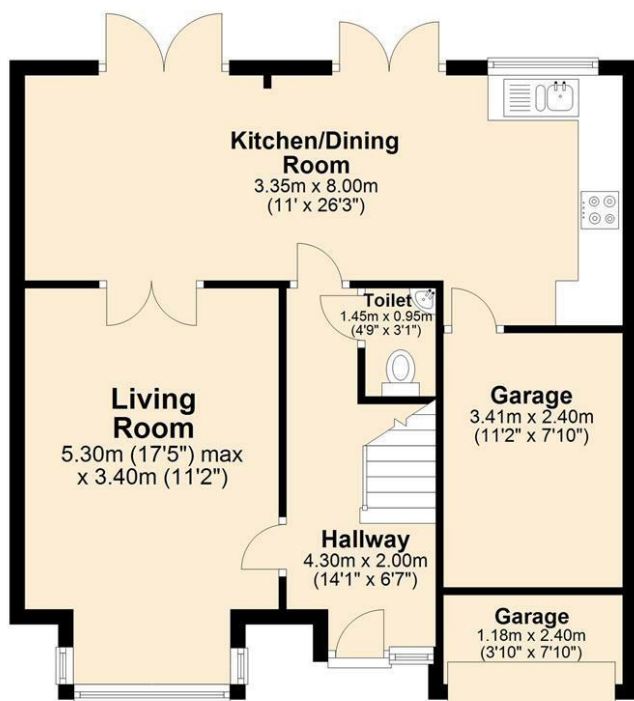
To find out more check out the video and floor plans. *Book your viewing now to avoid disappointment*

- Open Plan Kitchen/Diner
- Master With En Suite
- Stunning Interior
- Ready to Move into
- Popular Location
- Close to Sshools & Rail Links
- 4 Bed Detached
- NO CHAIN

£270,000

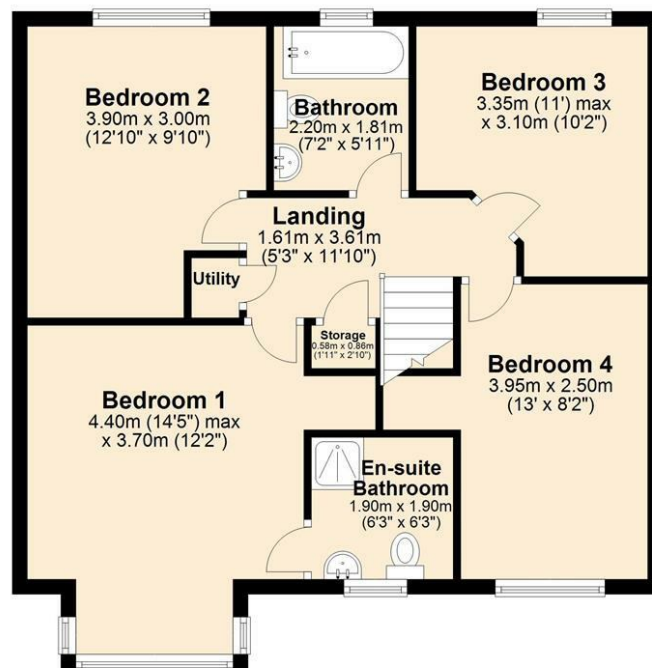
Ground Floor

Approx. 62.4 sq. metres (672.2 sq. feet)



First Floor

Approx. 62.8 sq. metres (675.5 sq. feet)



Total area: approx. 125.2 sq. metres (1347.6 sq. feet)

